

# College Application Checklist: 7 Steps for Senior Year Success!

**01** **Decide which colleges you plan on applying to!**

A good rule of thumb is to pick reach schools, good fits and safety schools. Use the spreadsheet sent to you to track information about the schools like deadlines and scholarships. Remember, choose the schools you could most see yourself attending.



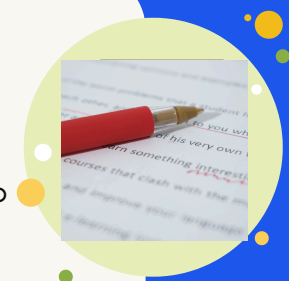
**02** **Create a Common App Account**

Visit [www.commonapp.org](http://www.commonapp.org) and create an account as a first-year applicant. Remember, in the Summer, Common App will delete any information you have added so wait until late July to. Be sure to keep a copy of anything you type into the application in a Word document or screen shot. Add the colleges where you are interested in applying to your dashboard.



**03** **Write Your College Essay**

Read the 7 prompts provided by Common App (and found [here](#)). Select 2 essays to respond to and from the 2 pick the one you feel is the strongest to begin the editing process. Be sure to also write any supplemental essays required for the schools you are applying to. What you write about should be unique to YOU, tell your own story.



**04** **Reformat Your Resume for the Common App Activities Section**

Common App allows you to select 10 activities to include in your application. Using the "activities" section, select the 10 activities you are most involved in and create a Word document where you format and word your involvement using the requirements for Common App. See attached for tips on how to format your word document.



**05** **Request Your Letters of Recommendation (*Only if needed*)**

Using the Letter of Recommendation Request Form on our [website](#), select 3-5 individuals to ask for a letter. 2-3 should be core class teachers from your Junior or Senior year and 1-2 can be from a guidance counselor, club sponsor, coach, or non-family member who knows you well. Florida public schools DO NOT accept letters of recommendation.



**06** **Meet regularly and remain in communication with Dr. Taylor & Ms. Tamara**

If we don't see you, we can't help you! We are here to help you be as prepared as possible for the college application process. Email us ([kristina.taylor@browardschools.com](mailto:kristina.taylor@browardschools.com) or [tamara.labossiere@browardschools.com](mailto:tamara.labossiere@browardschools.com)) with any questions you might have and schedule your virtual Summer meetings here or by scanning the QR code: [https://outlook.office365.com/owa/calendar/BRA\\_CEMeetings@browardcountyschools.onmicrosoft.com/bookings/](https://outlook.office365.com/owa/calendar/BRA_CEMeetings@browardcountyschools.onmicrosoft.com/bookings/)



**07** **Communicate with Your Family & Keep Attempting the SAT, ACT & CLT**

Applying to and beginning college is an enormous life change. Not just for you, but also for your parents & family. Talk about the options, the costs (visit the **Net Price Calculator** for the colleges you are interested in), everything so that everyone is on the same page and there are no surprises. Also, you have until graduation to qualify for Bright Futures, you can keep attempting the SAT, ACT and CLT past application deadlines to see if you meet the requirements for the scholarship.



# Formatting the Activities Section of the Common App

The goal is to have this information saved into a Word document so that all you need to do is copy and paste it into the "Activities" section of your Common Application in August of your Senior year.

## You can report a maximum of 10 activities

Pick the 10 you are MOST active in and list them in order of involvement with the ones you hold leadership positions in or have participated in the longest first.

## Categories for Activities

You need to identify the activity as one of the following categories:

Academic	Computer/Technology	Foreign Exchange	Music: Instrumental	Science/Math
Art	Cultural	Foreign Language	Music: Vocal	Social Justice
Athletics: Club	Dance	Internship	Religious	Student Govt./Politics
Athletics: JV/Varsity	Debate/Speech	Journalism/Publication	Research	Theater/Drama
Career Oriented	Environmental	Junior R.O.T.C.	Robotics	Work (Paid)
Community Service (Volunteer)	Family Responsibilities	LGBT	School Spirit	Other Club/Activity

Note: If it can fall into more than one category, pick the most appropriate one.

## Prepare the Following Information for Each Activity

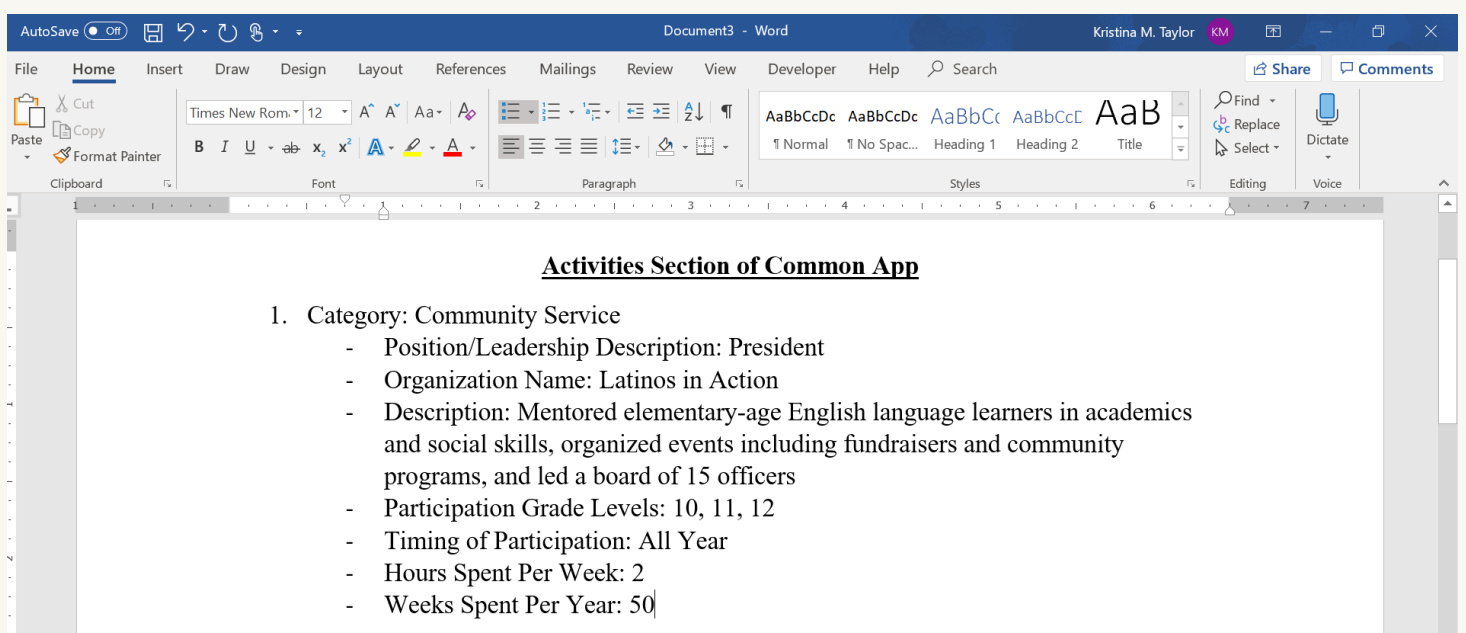
- Position/Leadership description (Max characters: 50)
- Organization Name (Max characters: 100)
- Description of the activity, including what you accomplished and any recognition you received, etc. (Max characters: 150)

150 **characters** is not a lot AT ALL!  
Be clear and to the point when answering this and always start your description with a verb.

## Additional Information Your Need to Prepare for the Activities Section

<b>Participation grade levels*</b> <input type="checkbox"/> 9 <input type="checkbox"/> 10 <input type="checkbox"/> 11 <input type="checkbox"/> 12 <input type="checkbox"/> Post-graduate	<b>Timing of participation*</b> <input type="checkbox"/> During school year <input type="checkbox"/> During school break <input type="checkbox"/> All year	<b>Hours spent per week*</b> <input type="text"/>  <b>Weeks spent per year*</b> <input type="text"/>
---	---	--

## Sample of How You Should Format Your Word Document



Repeat this for all 10 of your activities that you want to include.

# FLORIDA-SPECIFIC INFORMATION



MORE INFORMATION CAN BE FOUND ON XELLO

## UNIVERSITY OF FLORIDA



Early Application  
Deadline- November 1st  
Regular Application  
Deadline- January 15th

[Apply HERE!](#)

- Requires the SSAR
- Pathways for Admission:
  - [PaCE](#)
  - [Innovation Academy](#)
- GPA Range
  - Summer: 4.4 - 4.6/ Fall: 4.4 - 4.6
- SAT Range
  - Summer: 1240 - 1390/ Fall: 1370 - 1510
- ACT Range
  - Summer: 27 - 31/ Fall: 31 - 34

## FLORIDA STATE UNIVERSITY



Deadlines to Apply:  
Early Action-  
October 15th  
Regular Decision-  
December 1st

[Apply HERE!](#)

- Requires the SSAR
- Pathways for Admission:
  - Early Action
  - [Seminole Pathways](#)
- GPA Range
  - Summer: 4.1 - 4.5/ Fall: 4.3 - 4.6
- SAT Range
  - Summer: 1230 - 1320/ Fall: 1340 - 1450
- ACT Range
  - Summer: 26 - 30/ Fall: 29-33

## FLORIDA INTERNATIONAL UNIVERSITY



Deadline to Apply:  
Priority Deadline-  
October 23rd  
Rolling Admission After

[Apply HERE!](#)

- Must Send Transcripts Through Xello
- No Essay Required
- Must apply directly through FIU's website, not on Common App
- The sooner you apply, the sooner you receive a decision!
- GPA Range
  - Summer: 3.9 - 4.4/ Fall: 4.1 - 4.7
- SAT Range
  - Summer: 1060 - 1170/ Fall: 1240 - 1370
- ACT Range
  - Summer: 21-24/ Fall: 26-30

## UNIVERSITY OF SOUTH FLORIDA



Deadline to Apply:  
Priority Deadline-  
November 1st  
Rolling Admission After

[Apply HERE!](#)

- Requires the SSAR
- The sooner you apply, the sooner you receive a decision!
- GPA Range
  - Summer: 3.9 - 4.29/ Fall: 4.10 - 4.59
- SAT Range
  - Summer: 1100 - 1200/ Fall: 1250 - 1390
- ACT Range
  - Summer: 22-25/ Fall: 27-31

## UNIVERSITY OF CENTRAL FLORIDA



Deadline to Apply:  
Priority Deadline-  
November 1st  
Rolling Admission After

[Apply HERE!](#)

- Requires the SPARK
- The sooner you apply, the sooner you receive a decision!
- GPA Range
  - Summer: 3.9 - 4.3/ Fall: 4.1 - 4.5
- SAT Range
  - Summer: 1170 - 1240/ Fall: 1260 - 1380
- ACT Range
  - Summer: 23-26/ Fall: 26-30

VISIT US IN THE COLLEGE AND CAREER CENTER (ROOM 458)  
FOR MORE INFORMATION & FIND ALL THE DOCUMENTS FOR  
SENIOR YEAR SUCCESS HERE:

[HTTPS://WWW.BROWARDSCHOOLS.COM/PAGE/62292](https://www.browardschools.com/page/62292)