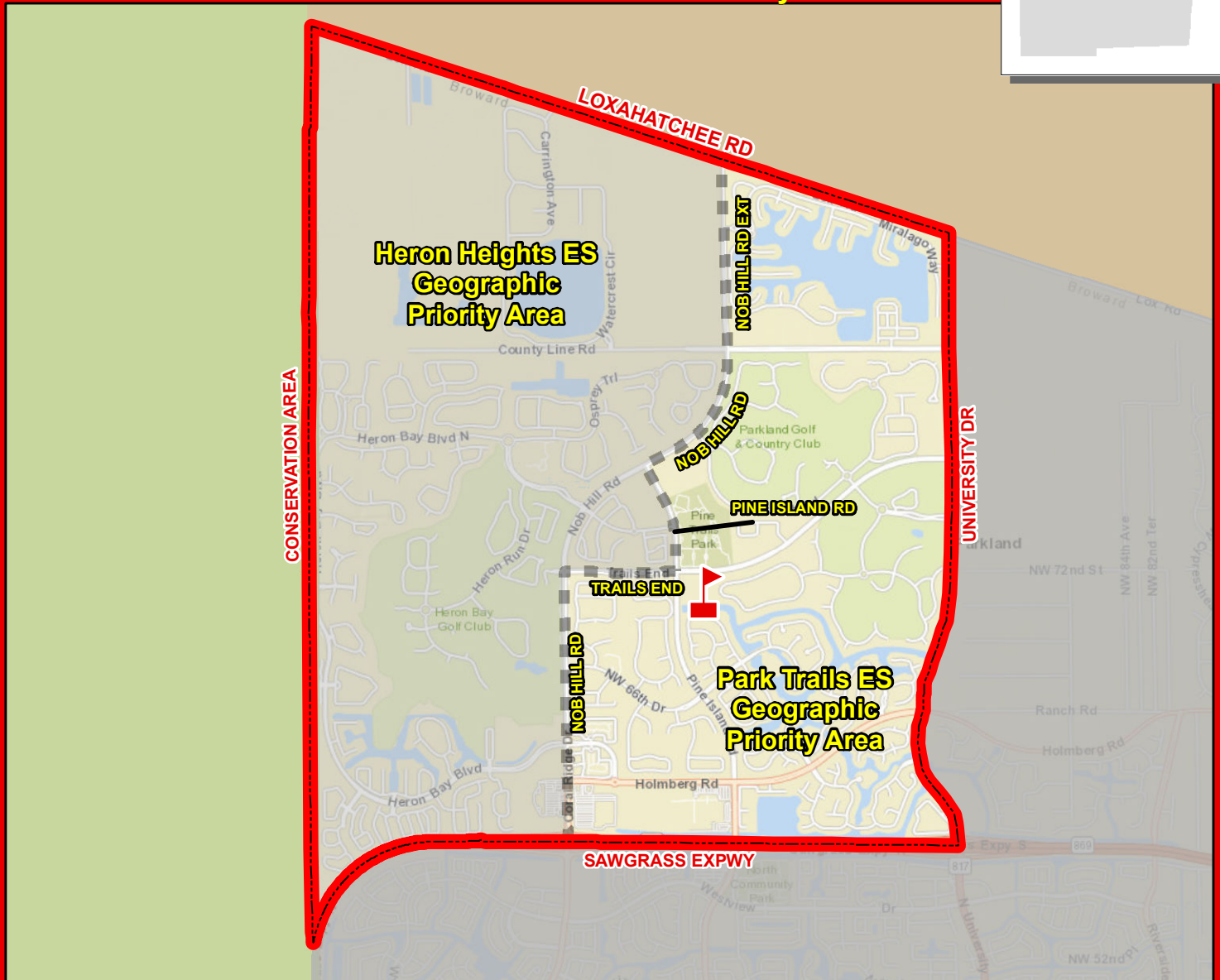
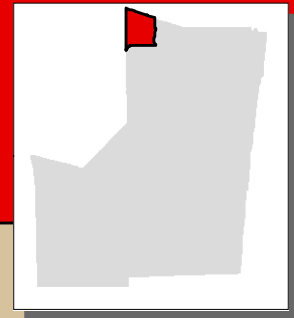


PARK TRAILS ELEMENTARY SCHOOL

10700 TRAILS END
 PARKLAND, FLORIDA 33076
 754-322-7800

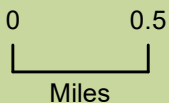
Combined Attendance Area
 Geographic Priority Area
 Boundary Choice Area



Combined Attendance Area: Kindergarten through fifth grade students living within the combined Heron Heights/ Park Trails Elementary School attendance area may request to attend either school. Siblings will be guaranteed placement in the same school and priority will be given to place students with siblings at the school they are currently attending. Remaining seats will be filled through parent request, giving priority based on the geographic priority areas indicated on the map. If no space is available at either Heron Heights or Park Trails Elementary School, new students in the combined boundary area may be assigned to Riverglades Elementary School.

Boundary Choice Area: Kindergarten through fifth grade students living within the combined Heron Heights/ Park Trails Elementary School attendance area may request to attend Riverglades Elementary School, pending space availability.

The Office of School Choice will assign all elementary students within the combined boundary to Heron Heights Elementary, Park Trails Elementary or Riverglades Elementary, based on parent preference, priorities and available space. Additional information is available online under Elementary Schools in Parkland at browardschools.com/schoolchoice or through the Office of School Choice at (754) 321-2480.



Service Layer Credits: Sources: Esri, HERE, Garmin, USGS, Intermap, INCREMENT P, NRCan, Esri Japan, METI, Esri China (Hong Kong), Esri Korea, Esri (Thailand), NGCC, (c) OpenStreetMap contributors, and the GIS User Community

THIS MAP IS FOR CONCEPTUAL PURPOSES ONLY AND SHOULD NOT BE USED FOR LEGAL BOUNDARY DETERMINATIONS

PARK TRAILS