



**THE SCHOOL BOARD OF BROWARD COUNTY, FLORIDA**  
**2023-2024 ORGANIZATIONAL CHART**

Board Approved: 05/16/23



**THE SCHOOL BOARD OF BROWARD COUNTY, FLORIDA  
2023-2024 ORGANIZATIONAL CHART**

|   |              |
|---|--------------|
| <b>School Board Appointed Committees &amp; Public Stakeholders</b>          | <b>1</b>     |
| <b>Superintendent of Schools (Direct &amp; Dotted Line Reports)</b>         | <b>2</b>     |
| <b>Teaching &amp; Learning (Direct Reports)</b>                             | <b>3-9</b>   |
| <b>Learning Communities</b>   | <b>4</b>     |
| <b>Academics</b>  | <b>5</b>     |
| <b>Exceptional Student Education</b>  | <b>6</b>     |
| <b>Research, Title I &amp; Engagement</b>                                   | <b>7</b>     |
| <b>Professional &amp; Leadership Development</b>                            | <b>8</b>     |
| <b>Student Services</b>   | <b>9</b>     |
| <b>Safety &amp; Security</b>  | <b>10</b>    |
| <b>Finance &amp; Operations (Direct Reports)</b>                            | <b>11-15</b> |
| <b>Building/Fire</b>  | <b>12</b>    |
| <b>Operations</b>   | <b>13</b>    |
| <b>Finance</b>  | <b>14-15</b> |
| <b>Communications &amp; Legislative Affairs</b>                             | <b>16</b>    |
| <b>Facilities</b>   | <b>17</b>    |
| <b>Information Technology</b>   | <b>18-20</b> |
| <b>Chief of Staff (Human Resources &amp; Equity; Strategic Improvement)</b> | <b>21</b>    |
| <b>Auditor</b>  | <b>22</b>    |
| <b>General Counsel</b>  | <b>23</b>    |

Funding from sources other than General Funds

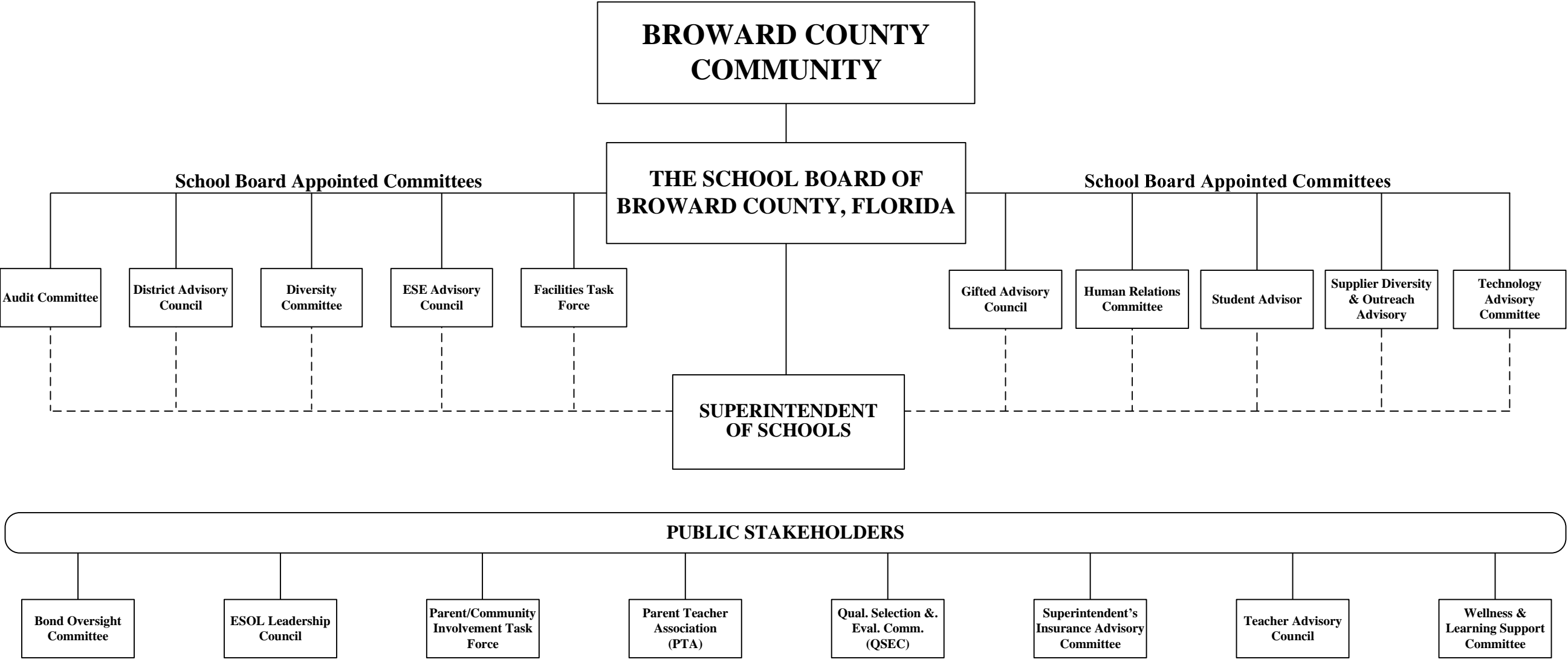
**Funding:**

- C** Capital   **FS** Food Service   **Gr** Grant
- G** General   **R** Referendum



**SCHOOL BOARD APPOINTED COMMITTEES & PUBLIC STAKEHOLDERS**

**THE SCHOOL BOARD OF BROWARD COUNTY, FL  
2023-2024 ORGANIZATIONAL CHART**

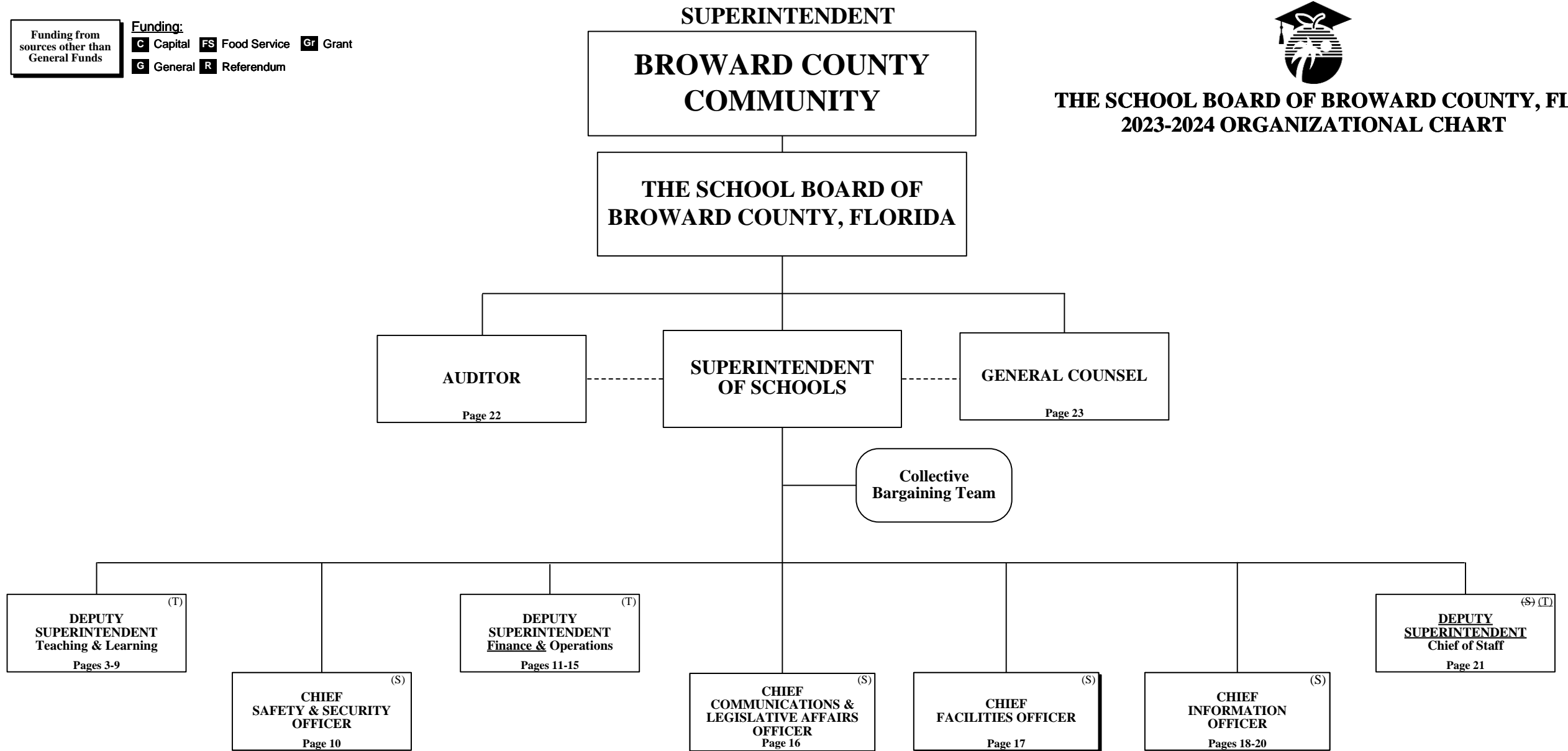


Funding from sources other than General Funds

Funding: **C** Capital **FS** Food Service **Gr** Grant  
**G** General **R** Referendum



**THE SCHOOL BOARD OF BROWARD COUNTY, FL  
 2023-2024 ORGANIZATIONAL CHART**



Funding from sources other than General Funds

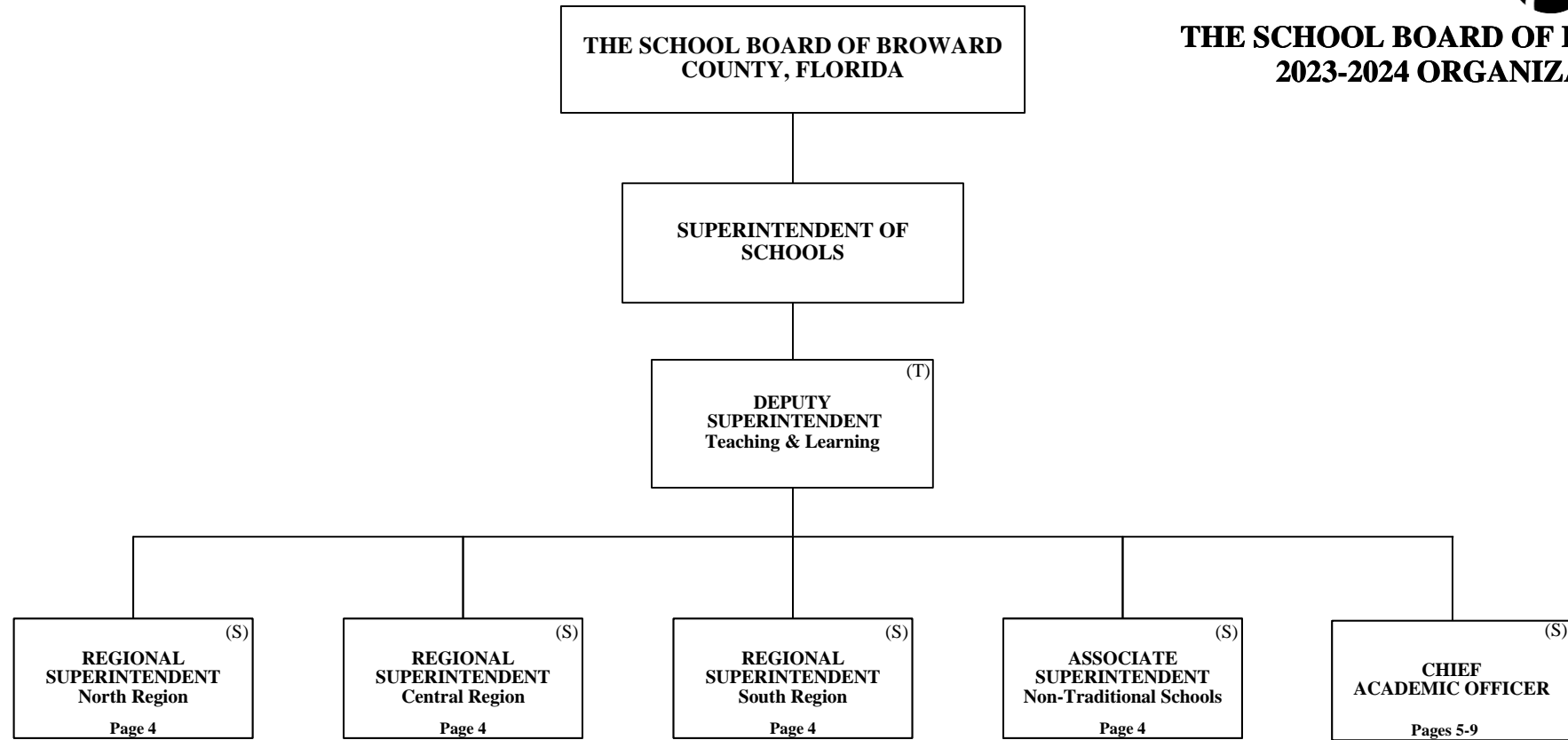
**Funding:**

**C** Capital **FS** Food Service **Gr** Grant  
**G** General **R** Referendum



**THE SCHOOL BOARD OF BROWARD COUNTY, FL  
2023-2024 ORGANIZATIONAL CHART**

**TEACHING & LEARNING**



Funding from sources other than General Funds

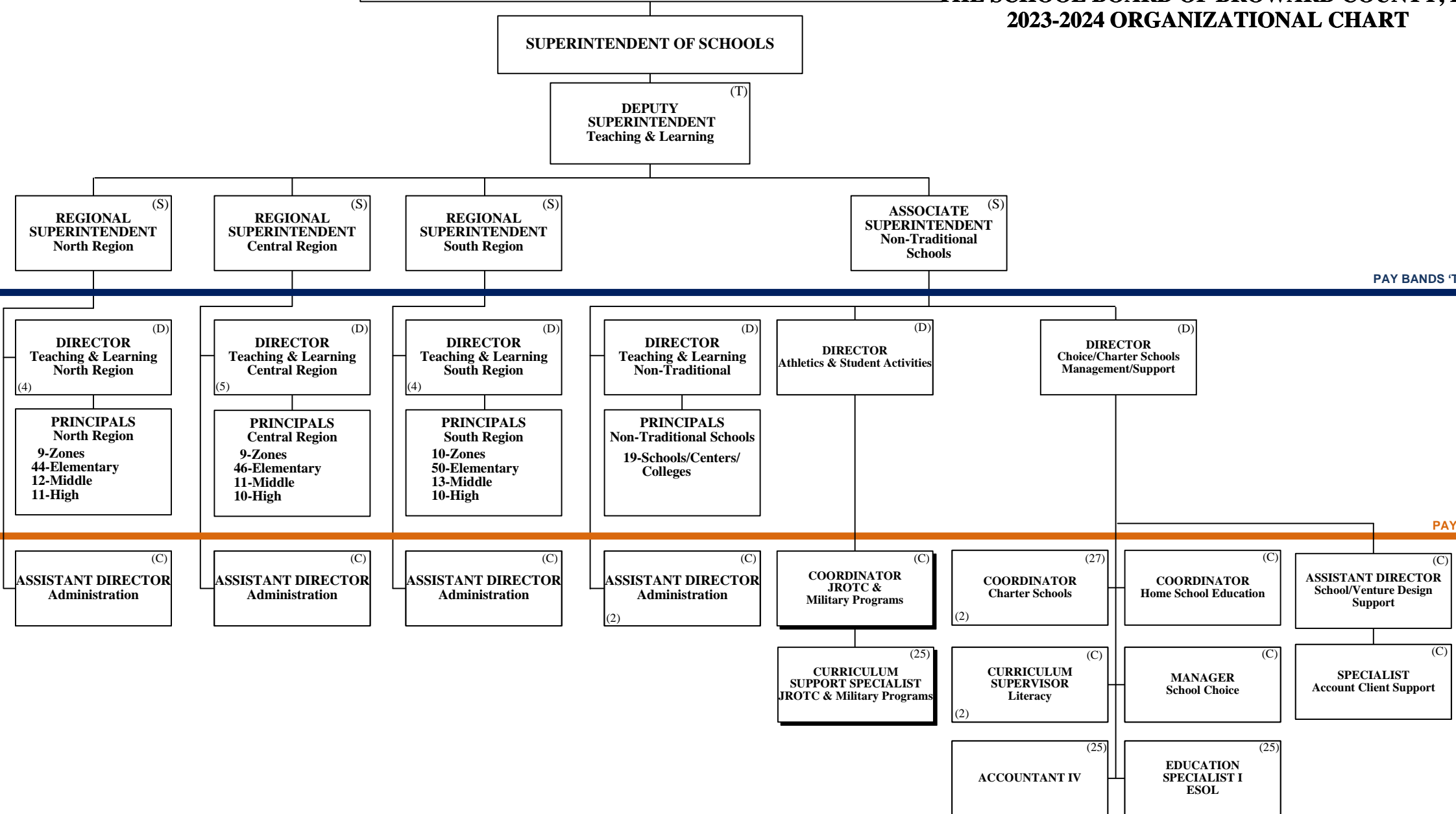
Funding: **C** Capital **FS** Food Service **Gr** Grant  
**G** General **R** Referendum

# TEACHING & LEARNING Learning Communities



THE SCHOOL BOARD OF BROWARD COUNTY, FLORIDA

THE SCHOOL BOARD OF BROWARD COUNTY, FL  
2023-2024 ORGANIZATIONAL CHART



PAY BANDS 'T' 'S' & 'E'

PAY BAND 'D'

PAY BANDS 'C' & 'B'

Funding from sources other than General Funds

Funding: **C** Capital **FS** Food Service **Gr** Grant **G** General **R** Referendum

# TEACHING & LEARNING Academics



## THE SCHOOL BOARD OF BROWARD COUNTY, FL 2023-2024 ORGANIZATIONAL CHART

THE SCHOOL BOARD OF BROWARD COUNTY, FLORIDA

SUPERINTENDENT OF SCHOOLS

DEPUTY SUPERINTENDENT Teaching & Learning (T)

CHIEF ACADEMIC OFFICER (S)

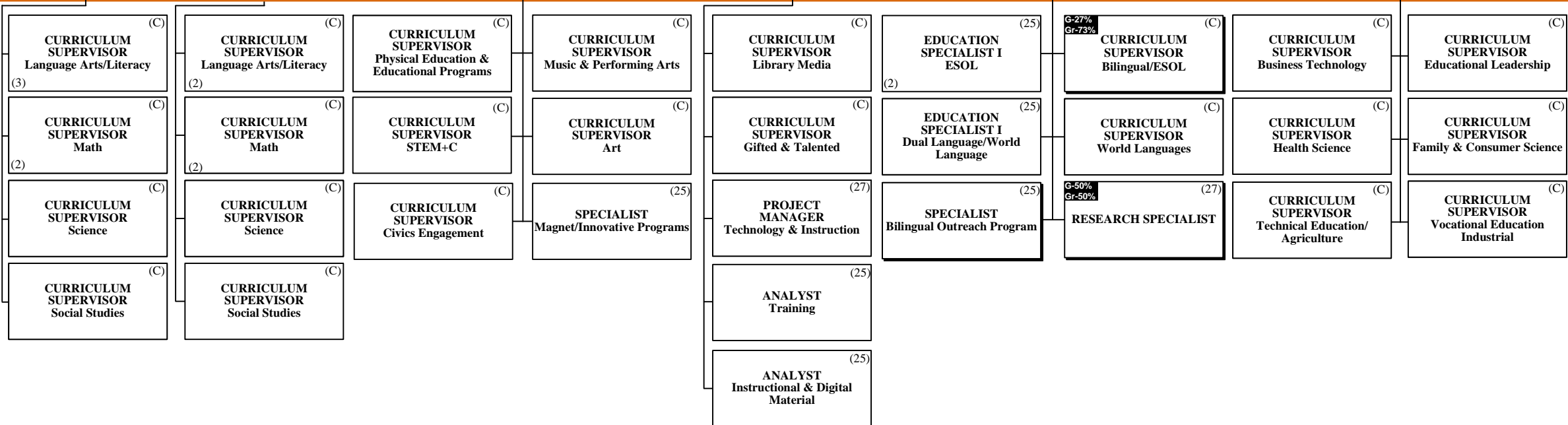
EXECUTIVE DIRECTOR Academics (E)

PAY BANDS 'T' 'S' & 'E'



DIRECTOR Elementary Learning (D)    DIRECTOR Secondary Learning (D)    DIRECTOR Applied Learning (D)    DIRECTOR Innovative Learning (D)    DIRECTOR Bilingual/ESOL (D)    DIRECTOR Career, Technical, Adult, Community Education (D)

PAY BAND 'D'



PAY BANDS 'C' & 'B'

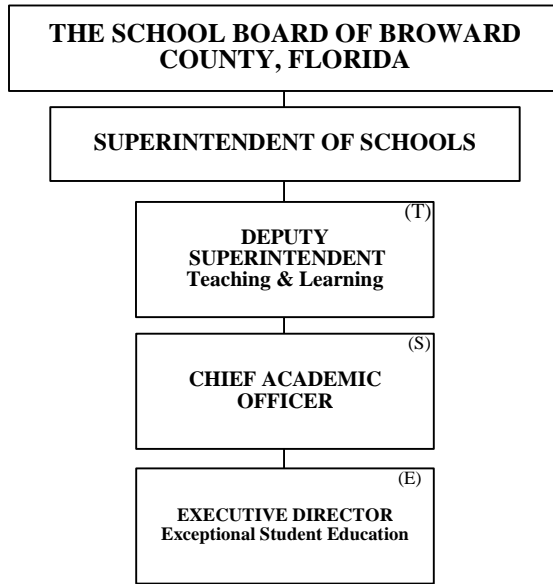
Funding from sources other than General Funds

Funding:  
**C** Capital **FS** Food Service **Gr** Grant  
**G** General **R** Referendum

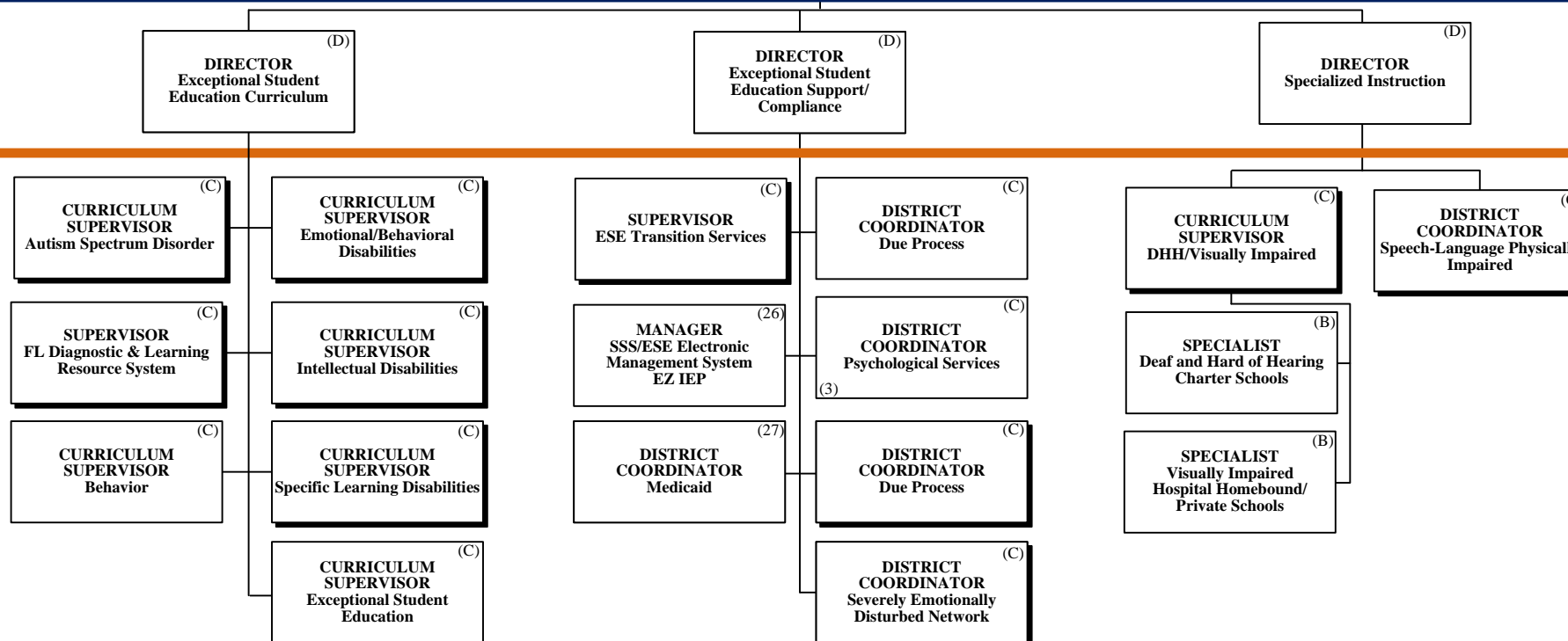
# TEACHING & LEARNING Exceptional Student Education



## THE SCHOOL BOARD OF BROWARD COUNTY, FL 2023-2024 ORGANIZATIONAL CHART



PAY BANDS 'T' 'S' & 'E'



PAY BAND 'D'

PAY BANDS 'C' & 'B'



Funding from sources other than General Funds

**Funding:**

- C** Capital   **FS** Food Service   **Gr** Grant
- G** General   **R** Referendum

# TEACHING & LEARNING Research, Title I & Engagement



## THE SCHOOL BOARD OF BROWARD COUNTY, FL 2023-2024 ORGANIZATIONAL CHART

THE SCHOOL BOARD OF BROWARD COUNTY, FLORIDA

SUPERINTENDENT OF SCHOOLS

DEPUTY SUPERINTENDENT  
Teaching & Learning <sup>(T)</sup>

CHIEF ACADEMIC OFFICER <sup>(S)</sup>

EXECUTIVE DIRECTOR  
Academics <sup>(E)</sup>

EXECUTIVE DIRECTOR  
Family & Community Engagement <sup>(E)</sup>

PAY BANDS 'T' 'S' & 'E'

DIRECTOR  
Research, Evaluation & Accountability <sup>(D)</sup>

<sup>G-10%  
Gr-90%</sup> DIRECTOR  
Title I, Migrant & Special Programs <sup>(D)</sup>

<sup>G-10%  
Gr-90%</sup> DIRECTOR  
Head Start/Early Intervention <sup>(D)</sup>

DIRECTOR  
Before & After School Care <sup>(D)</sup>

EVALUATION ADMINISTRATOR <sup>(27)</sup>

SPECIALIST Testing <sup>(25)</sup>  
<sup>(2)</sup>

COORDINATOR School Improvement <sup>(C)</sup>

RESEARCH SPECIALIST <sup>(27)</sup>

RESEARCH SPECIALIST <sup>(27)</sup>  
<sup>(2)</sup>

SPECIALIST Title I <sup>(25)</sup>  
<sup>(5)</sup>

SPECIALIST (ESEA Title I) Basic Schoolwide Project & Program Improvement <sup>(25)</sup>

SPECIALIST Grant Administrator <sup>(25)</sup>

ASSISTANT DIRECTOR Family & Community Engagement <sup>(C)</sup>

SPECIALIST Family Engagement <sup>(25)</sup>

SPECIALIST Community Engagement <sup>(25)</sup>

CURRICULUM SUPERVISOR School Readiness <sup>(C)</sup>

CURRICULUM SUPERVISOR Head Start/Early Head Start <sup>(C)</sup>

CURRICULUM SUPERVISOR VPK Programs <sup>(C)</sup>

SPECIALIST Head Start/Early Head Start <sup>(B)</sup>

CURRICULUM SUPERVISOR Preschool ESE <sup>(C)</sup>

SPECIALIST Head Start Family Services <sup>(B)</sup>

PAY BAND 'D'

PAY BANDS 'C' & 'B'

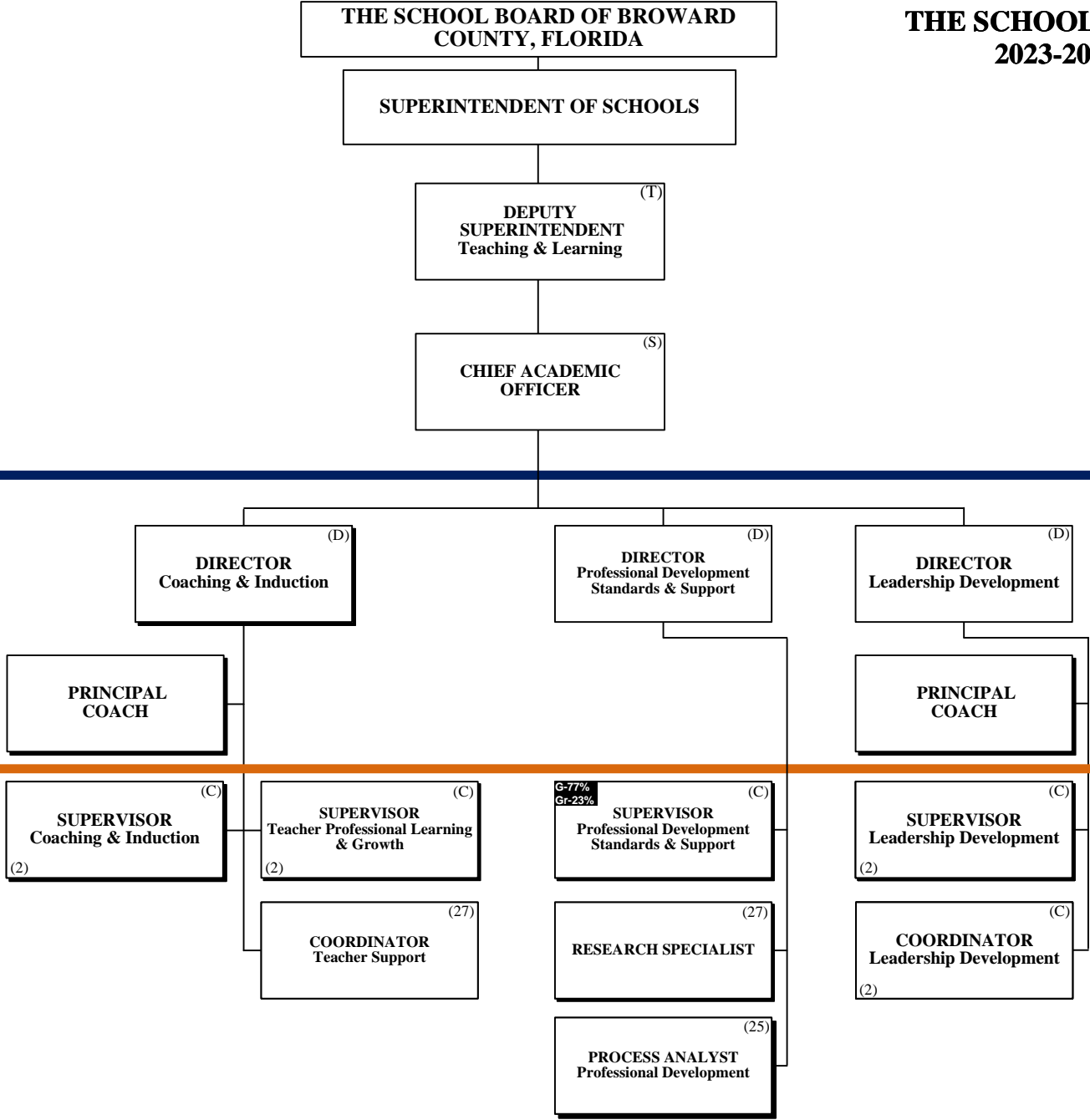
Funding from sources other than General Funds

Funding: **C** Capital **FS** Food Service **Gr** Grant  
**G** General **R** Referendum

# TEACHING & LEARNING Professional & Leadership Development



## THE SCHOOL BOARD OF BROWARD COUNTY, FL 2023-2024 ORGANIZATIONAL CHART



PAY BANDS 'T' 'S' & 'E'

PAY BAND 'D'

PAY BANDS 'C' & 'B'

Funding from sources other than General Funds

Funding:  
**C** Capital **FS** Food Service **Gr** Grant  
**G** General **R** Referendum

# TEACHING & LEARNING Student Services



## THE SCHOOL BOARD OF BROWARD COUNTY, FL 2023-2024 ORGANIZATIONAL CHART

THE SCHOOL BOARD OF  
BROWARD COUNTY, FLORIDA

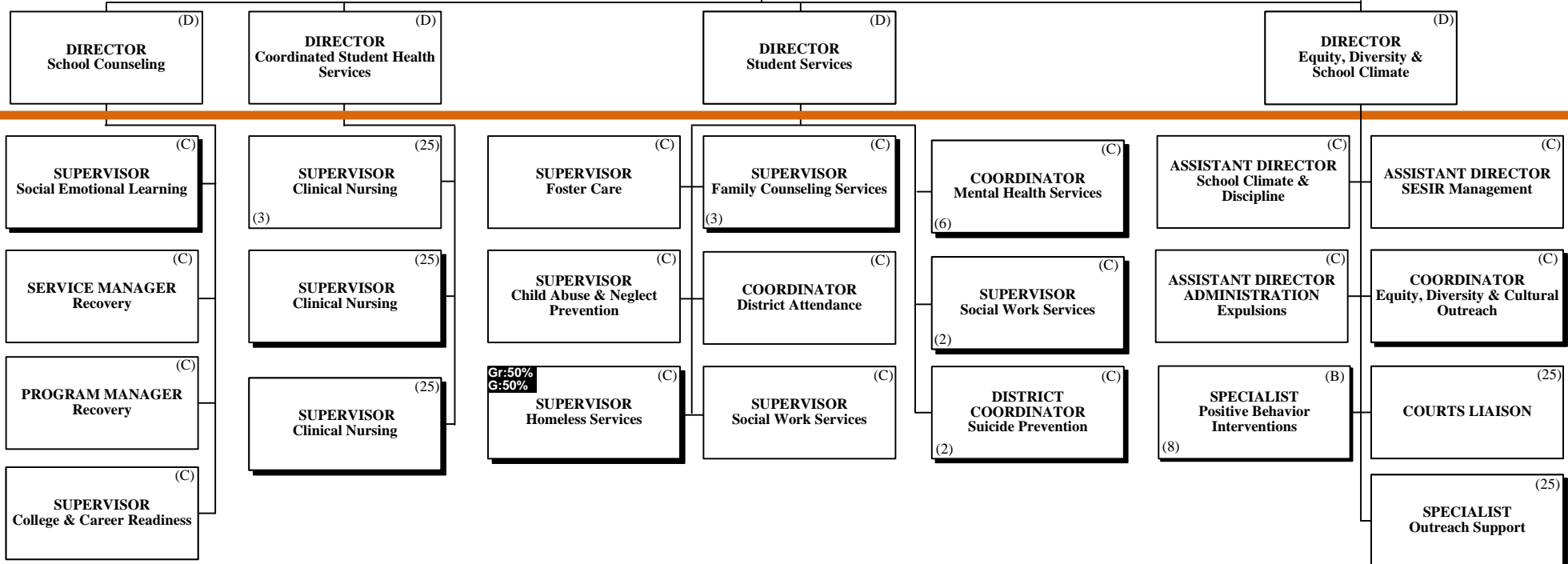
SUPERINTENDENT OF SCHOOLS

DEPUTY SUPERINTENDENT  
Teaching & Learning (T)

CHIEF ACADEMIC OFFICER (S)

EXECUTIVE DIRECTOR  
Student Services (E)

PAY BANDS 'T' 'S' & 'E'



PAY BAND 'D'

PAY BANDS 'C' & 'B'

Funding from sources other than General Funds

Funding: **C** Capital **FS** Food Service **Gr** Grant **G** General **R** Referendum

# SAFETY & SECURITY

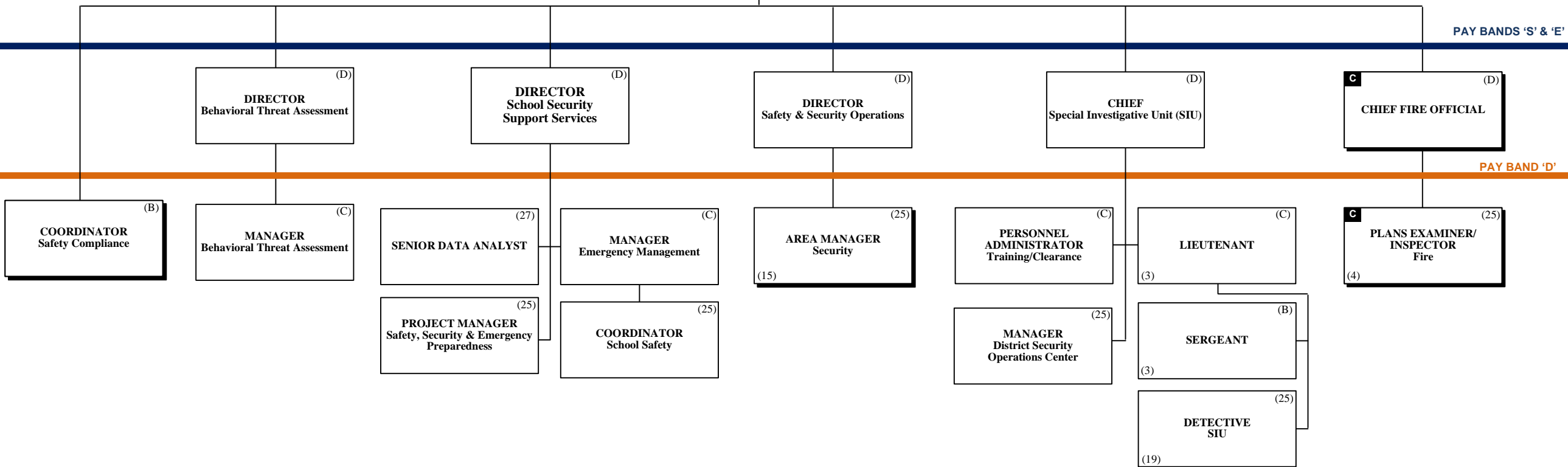


## THE SCHOOL BOARD OF BROWARD COUNTY, FL 2023-2024 ORGANIZATIONAL CHART

THE SCHOOL BOARD OF BROWARD COUNTY, FLORIDA

SUPERINTENDENT OF SCHOOLS

CHIEF SAFETY & SECURITY OFFICER (S)



PAY BANDS 'S' & 'E'

PAY BAND 'D'

ESMAB PAY BANDS 'C' & 'B'  
TSP PAY GRADES 25-28

Funding from sources other than General Funds

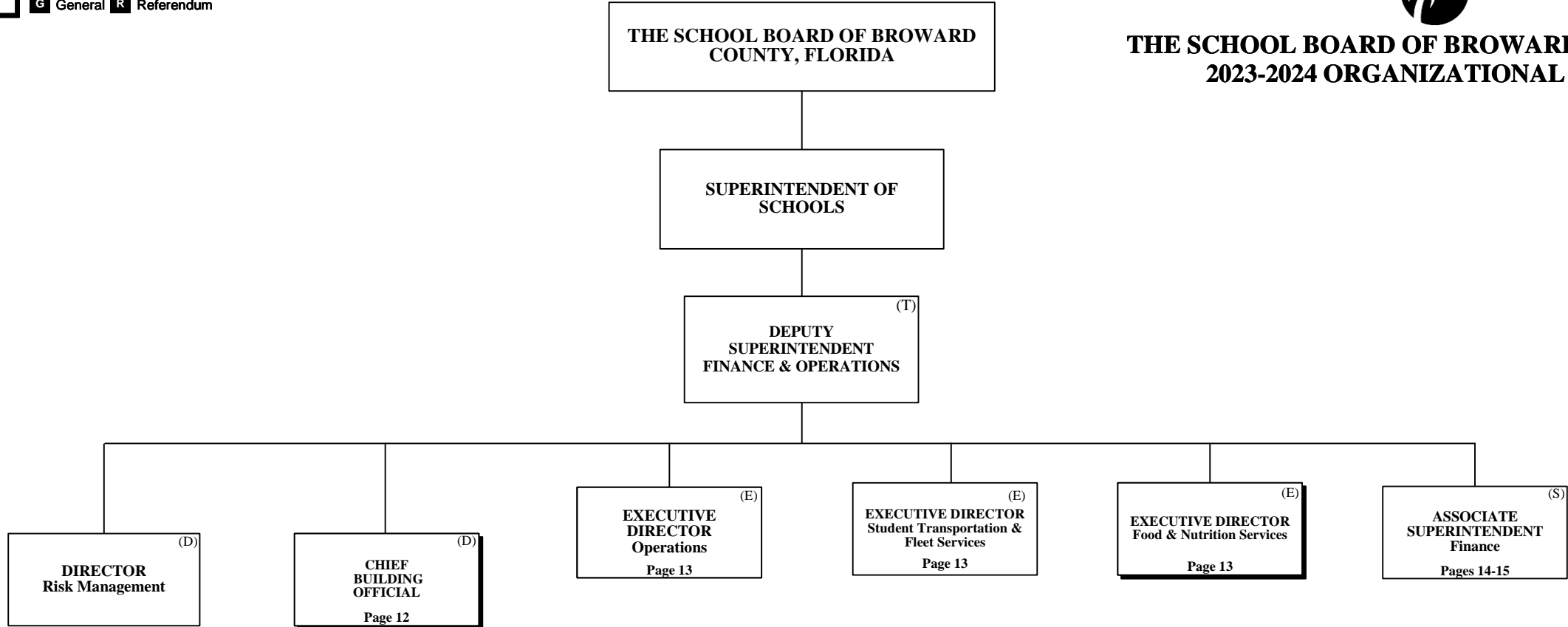
**Funding:**

- C** Capital   **FS** Food Service   **Gr** Grant
- G** General   **R** Referendum

# FINANCE & OPERATIONS



## THE SCHOOL BOARD OF BROWARD COUNTY, FL 2023-2024 ORGANIZATIONAL CHART



# FINANCE & OPERATIONS

## Building/Fire



### THE SCHOOL BOARD OF BROWARD COUNTY, FL 2023-2024 ORGANIZATIONAL CHART

Funding from sources other than General Funds

Funding: **C** Capital **FS** Food Service **Gr** Grant  
**G** General **R** Referendum

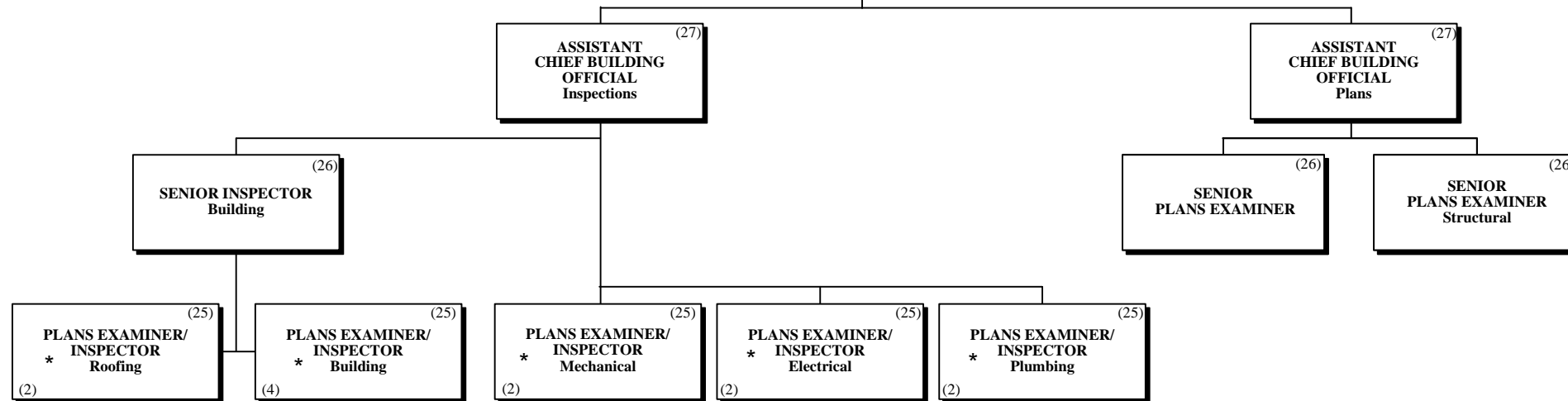
THE SCHOOL BOARD OF BROWARD COUNTY, FLORIDA

SUPERINTENDENT OF SCHOOLS

DEPUTY SUPERINTENDENT FINANCE & OPERATIONS (T)

CHIEF BUILDING OFFICIAL (D)

PAY BANDS 'T' 'S' & 'E'



\* Additional external resources are utilized based on district projects' needs

PAY BANDS 'C' & 'B'  
PAY GRADES 25-28

Funding from sources other than General Funds

Funding: **C** Capital **FS** Food Service **Gr** Grant **G** General **R** Referendum



# FINANCE & OPERATIONS Operations

THE SCHOOL BOARD OF BROWARD COUNTY, FLORIDA

## THE SCHOOL BOARD OF BROWARD COUNTY, FL 2023-2024 ORGANIZATIONAL CHART

SUPERINTENDENT OF SCHOOLS

DEPUTY SUPERINTENDENT  
FINANCE & OPERATIONS (T)

EXECUTIVE DIRECTOR  
Food & Nutrition Services (E)

EXECUTIVE DIRECTOR  
Student Transportation & Fleet Services (E)

EXECUTIVE DIRECTOR  
Operations (E)

PAY BANDS 'S' & 'E'

DIRECTOR  
Student Transportation & Fleet Services (D)

DIRECTOR  
Procurement & Warehousing Services (D)

OFFICER  
Economic Development & Diversity Compliance (D)  
C-50%  
G-50%

DIRECTOR  
Business Support Center (D)

PAY BAND 'D'

ASSISTANT DIRECTOR  
Food & Nutrition Services (C)

COORDINATOR  
Food & Nutrition Services (C)  
(2)

ASSISTANT DIRECTOR  
Transportation Operations (C)

MANAGER I  
Transportation Terminal (B)  
(2)

MANAGER I  
Vehicle Maintenance (C)  
(25)

MANAGER  
Strategic Sourcing (C)

ASSISTANT DIRECTOR  
Procurement Compliance (C)

MANAGER  
Supplier Diversity & Outreach Program (C)  
C-50%  
G-50%

MANAGER  
Budget (27)

AREA SUPERVISOR  
Food & Nutrition Services (B)  
(11)

FINANCE MANAGER  
Food & Nutrition Services (C)

MANAGER II  
Transportation Terminal (C)  
(2)

SUPERVISOR  
Special Needs Transportation (25)

SUPERVISOR  
Vehicle Maintenance (25)  
(2)

MANAGER  
Warehousing Services (C)

SENIOR PROCESS ANALYST (C)

COORDINATOR  
Supplier Diversity & Outreach Program (26)

BUSINESS ANALYST (27)  
(2)

AREA SUPERVISOR  
Special Programs Food & Nutrition Services (B)  
(2)

SUPERVISOR  
Food & Nutrition Services Information Systems (B)  
(25)

ACCOUNTANT V (27)

MANAGER  
Centralized Routing (C)  
(27)

MANAGER  
Centralized Routing (C)  
(27)

MANAGER  
Construction Sourcing (C)  
(25)

SENIOR PROCESS ANALYST (C)  
(25)

COORDINATOR  
Supplier Diversity & Outreach Program (Compliance) (26)  
C-50%  
G-50%

PROCESS ANALYST  
Business Support Center (25)  
(2)

SUPERVISOR  
Food & Nutrition Services Equipment & Supplies (25)

SENIOR DATA ANALYST  
Transportation (27)

PURCHASING AGENT IV  
Construction (25)

PROCESS ANALYST  
Procurement & Warehousing Services (25)  
(3)

PROGRAM MANAGER  
Nutrition, Education & Training (26)

PURCHASING AGENT IV (25)  
(2)

PAY BANDS 'C' & 'B'  
PAY GRADES 25-28

Funding from sources other than General Funds

Funding: **C** Capital **FS** Food Service **Gr** Grant **G** General **R** Referendum

# FINANCE & OPERATIONS Finance



## THE SCHOOL BOARD OF BROWARD COUNTY, FL 2023-2024 ORGANIZATIONAL CHART

THE SCHOOL BOARD OF BROWARD COUNTY, FLORIDA

SUPERINTENDENT OF SCHOOLS

DEPUTY SUPERINTENDENT FINANCE & OPERATIONS (T)

ASSOCIATE SUPERINTENDENT Finance (S)  
C-20%  
G-80%

PAY BANDS 'T' 'S' & 'E'

DIRECTOR Accounting & Financial Reporting (D)

DIRECTOR Budget (D)

TREASURER (D)  
C-50%  
G-50%

DIRECTOR Payroll (D)

DIRECTOR Capital Budget (D)

PAY BAND 'D'

ACCOUNTANT V (27)  
C-50%  
G-50%

MANAGER Accounts Payable (27)

ASSISTANT DIRECTOR Accounting & Financial Reporting (C)

ACCOUNTANT V (C)

ACCOUNTANT IV (25)  
(5)

ASSISTANT DIRECTOR School Budget Support (C)

BUSINESS ANALYST (27)  
(2)

EVALUATION ADMINISTRATOR (27)

ASSISTANT DIRECTOR District Budgets & Revenue (C)

BUDGET ANALYST V (C)

BUDGET ANALYST V (C)

BUDGET ANALYST IV (B)  
(3)

BUDGET ANALYST V (C)

BUDGET ANALYST IV (B)  
(4)

MANAGER Treasury (27)

SENIOR PAYROLL ANALYST (C)

SUPERVISOR Payroll (C)

ACCOUNTANT IV (25)

ASSISTANT DIRECTOR Capital Budget (C)

CAPITAL BUDGET ANALYST V (27)

CAPITAL BUDGET ANALYST IV (25)  
(2)

CAPITAL NETWORK SYSTEMS ADMINISTRATOR (27)

CAPITAL PAYMENT REVIEW SUPERVISOR (27)

PAY BANDS 'C' & 'B'  
PAY GRADES 25-28



Funding from sources other than General Funds

Funding: **C** Capital **FS** Food Service **Gr** Grant **G** General **R** Referendum

# FINANCE & OPERATIONS Finance



## THE SCHOOL BOARD OF BROWARD COUNTY, FL 2023-2024 ORGANIZATIONAL CHART

THE SCHOOL BOARD OF BROWARD COUNTY, FLORIDA

SUPERINTENDENT OF SCHOOLS

DEPUTY SUPERINTENDENT  
FINANCE & OPERATIONS (T)

ASSOCIATE SUPERINTENDENT  
Finance (S)  
C-20%  
G-80%

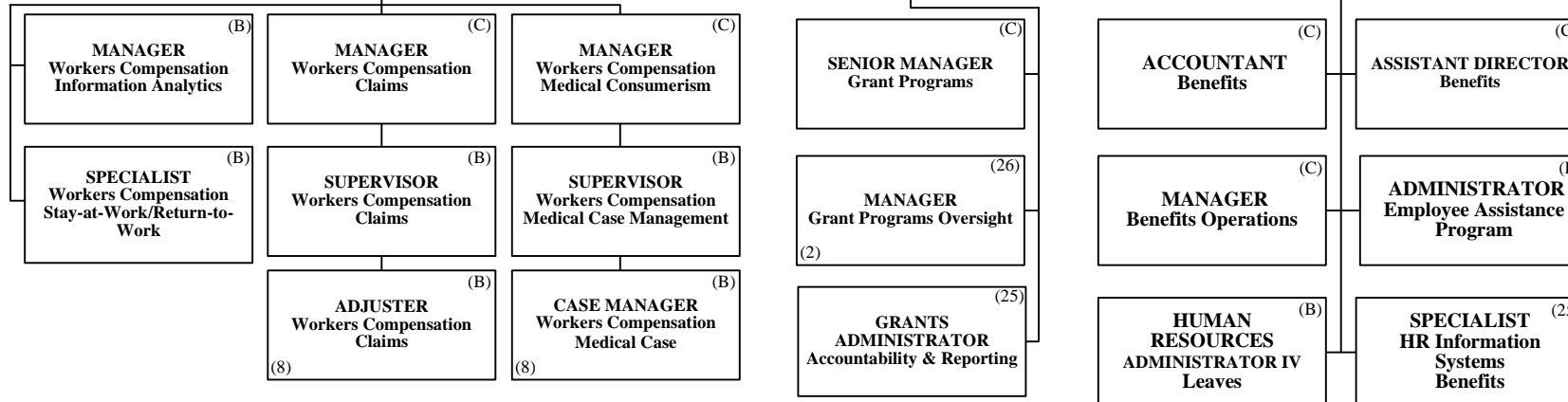
PAY BANDS 'T' 'S' & 'E'

DIRECTOR  
Workers Compensation (D)

DIRECTOR  
Grants Administration (D)

DIRECTOR  
Benefits & Employment Services (D)

PAY BAND 'D'



PAY BANDS 'C' & 'B'  
PAY GRADES 25-28

Funding from sources other than General Funds

Funding: **C** Capital **FS** Food Service **Gr** Grant **G** General **R** Referendum



**COMMUNICATIONS & LEGISLATIVE AFFAIRS**

**THE SCHOOL BOARD OF BROWARD COUNTY, FL  
2023-2024 ORGANIZATIONAL CHART**

THE SCHOOL BOARD OF BROWARD COUNTY, FLORIDA

SUPERINTENDENT OF SCHOOLS

CHIEF COMMUNICATIONS & LEGISLATIVE AFFAIRS OFFICER (S)

EXECUTIVE DIRECTOR BECON/Marketing (E)

DIRECTOR Marketing & Strategic Communications (D)

DIRECTOR Mass Media & Community Relations (D)

DIRECTOR Legislative Affairs (D)

MANAGER Marketing (C)

MANAGER Graphics (26)

BECON STATION MANAGER (28)

SPECIALIST Communications (25)  
(2)

COORDINATOR District Community Assistant (27)

COORDINATOR Governmental Affairs (27)

COORDINATOR Strategic Partnerships (26)

SUPERVISOR I Printing Services (26)

MANAGER II School Services (B)

MANAGER II Engineering (26)

SPECIALIST Communications (25)

MANAGER II Production (26)

PAY BANDS 'T' 'S' & 'E'

PAY BAND 'D'

PAY BANDS 'C' & 'B'  
PAY GRADES 25-28

Funding from sources other than General Funds

Funding: **C** Capital **FS** Food Service **Gr** Grant **G** General **R** Referendum

# FACILITIES

THE SCHOOL BOARD OF BROWARD COUNTY, FLORIDA



## THE SCHOOL BOARD OF BROWARD COUNTY, FL 2023-2024 ORGANIZATIONAL CHART

SUPERINTENDENT OF SCHOOLS

CHIEF FACILITIES OFFICER (S)  
A

EXECUTIVE DIRECTOR Capital Programs (E)

EXECUTIVE DIRECTOR Physical Plant Operations (E)

PAY BANDS 'S' & 'E'

DIRECTOR Construction (D)

DIRECTOR Pre-Construction (D)

DIRECTOR Facility Planning & Real Estate (D)

DIRECTOR Physical Plant Operations (D)  
C-70%  
G-30%

DIRECTOR Environmental Health & Safety (D)

DIRECTOR Demographics & Enrollment Planning (D)

PAY BAND 'D'

MANAGER Construction (C)  
(2)

MANAGER Mechanical Engineering (C)

MANAGER ADA Accessibility (C)  
(3)

COORDINATOR Facility Planning & Educational Programming (27)

PLANNER Growth Management (27)

MANAGER Custodial (C)  
C-55%  
G-45%

MANAGER PPO Finance (C)

MANAGER Environmental Conservation/Utility Management (27)

COORDINATOR Environmental Compliance (C)

SPECIALIST Demographer/Statistician (27)

MANAGER Construction (C)  
(2)

MANAGER Architectural Engineering (C)

SPECIALIST ADA Accessibility (25)

SENIOR PROPERTY COORDINATOR (C)

PLANNER Growth Management Monitoring (27)

MANAGER Grounds (26)  
C-55%  
G-45%

SENIOR PROCESS ANALYST (C)

PROJECT MANAGER II Guaranteed Energy Performance (26)

PROJECT MANAGER Occupational Health/Environmental Control (25)  
(2)

PROJECT MANAGER III (27)  
(2)

MANAGER Electrical Engineering (C)

PROJECT MANAGER III (27)

PROPERTY COORDINATOR (26)

MANAGER Business Process & Performance Improvement (C)

AREA MANAGER Trades (Zones 1, 2, 3, & District) (4)  
C-70%  
G-30%

SUPERVISOR Planning & Scheduling (25)  
C-55%  
G-45%

SPECIALIST IV Building Control (25)

COORDINATOR Health & Safety (B)

SUPERVISOR Trades (25)  
(9)

MANAGER Facilities Support Services (C)

SPECIALIST Safety Training (25)

SPECIALIST PPO Training (25)

PAY BANDS 'C' & 'B'  
PAY GRADES 25-28

Funding from sources other than General Funds

Funding: **C** Capital **FS** Food Service **Gr** Grant **G** General **R** Referendum

# INFORMATION TECHNOLOGY



## THE SCHOOL BOARD OF BROWARD COUNTY, FL 2023-2024 ORGANIZATIONAL CHART

THE SCHOOL BOARD OF BROWARD COUNTY, FLORIDA

SUPERINTENDENT OF SCHOOLS

CHIEF INFORMATION OFFICER (S)

EXECUTIVE DIRECTOR IT Operations (E)

DIRECTOR IT Security (D)

DIRECTOR Infrastructure Services (D)

PAY BANDS 'T' 'S' & 'E'

PAY BAND 'D'

ASSISTANT DIRECTOR IT Security (C)

ASSISTANT DIRECTOR Safety Technology (C)

ASSISTANT DIRECTOR Information Technology (C)

ASSISTANT DIRECTOR Information Technology (C)

ASSISTANT DIRECTOR Information Technology (C)

ADMINISTRATOR ERP Compliance (C)

CYBER THREAT DEFENDER (26)

CYBER SECURITY SOFTWARE ENGINEER (26)

SYSTEMS ANALYST IV (26)

SENIOR SYSTEMS PROGRAMMER (27)

COORDINATOR District Network (26)

IT SYSTEMS ARCHITECT (C)

SYSTEMS ENGINEER (26)

SPECIALIST III Systems Support (26)

SECURITY ANALYST (26)

SYSTEMS ENGINEER (26)

SENIOR ANALYST Telecommunications (25)

ENGINEER II IT NOC & Maintenance (25)

ENGINEER II IT NOC & Maintenance (25)

EXAMINER Digital Forensics (26)

MANAGER Database Administration (27)

PAY BANDS 'C' & 'B'  
PAY GRADES 25-28

Funding from sources other than General Funds

Funding: **C** Capital **FS** Food Service **Gr** Grant **G** General **R** Referendum

**OPERATIONS  
Information Technology**



**THE SCHOOL BOARD OF BROWARD COUNTY, FL  
2023-2024 ORGANIZATIONAL CHART**

THE SCHOOL BOARD OF BROWARD COUNTY, FLORIDA

SUPERINTENDENT OF SCHOOLS

CHIEF INFORMATION OFFICER (S)

EXECUTIVE DIRECTOR IT Operations (E)

PAY BANDS 'T' 'S' & 'E'

DIRECTOR Enterprise Applications (D)

DIRECTOR Data Intelligence (D)

PAY BAND 'D'

ASSISTANT DIRECTOR Management Systems (C)

ASSISTANT DIRECTOR ERP (C)

ASSISTANT DIRECTOR Student Information Systems (C)

ASSISTANT DIRECTOR Data Management (C)

ASSISTANT DIRECTOR Business Intelligence (C)

SYSTEMS ANALYST IV (26)  
(2)

MANAGER IT ERP FICO & BI (27)

MANAGER IT ERP HCM (27)

MANAGER IT ERP Development & Support (27)

SYSTEMS ANALYST IV (26)

SYSTEMS ANALYST IV (26)

SYSTEMS ANALYST IV (26)

PROCESS ANALYST Change Management/ Webmaster (25)

PROCESS ANALYST Budget Planning (25)

PROCESS ANALYST Payroll (25)  
(2)

PORTAL ADMINISTRATOR (26)

PROCESS ANALYST Business System Intelligence (25)  
(2)

PROCESS ANALYST Funds Management & PBC (25)

SPECIALIST HR Information Systems (25)  
(2)

BASIS ADMINISTRATOR (26)

PAY BANDS 'C' & 'B'  
PAY GRADES 25-28

Funding from sources other than General Funds

Funding: **C** Capital **FS** Food Service **Gr** Grant **G** General **R** Referendum



**THE SCHOOL BOARD OF BROWARD COUNTY, FL  
2023-2024 ORGANIZATIONAL CHART**

**OPERATIONS  
Information Technology**

THE SCHOOL BOARD OF BROWARD COUNTY, FLORIDA

SUPERINTENDENT OF SCHOOLS

CHIEF INFORMATION OFFICER (S)

EXECUTIVE DIRECTOR IT Services (E)

PAY BANDS 'T' 'S' & 'E'

DIRECTOR (D)  
Planning, Implementation, Transition, Adoption & Continuous Improvement

DIRECTOR (D)  
Technology Support Services

PAY BAND 'D'

ASSISTANT DIRECTOR (C)  
Planning & Implementation

ASSISTANT DIRECTOR (C)  
Training, Adoption, Continuous Improvement

ASSISTANT DIRECTOR (C)  
Technical Support

ASSISTANT DIRECTOR (C)  
Service Desk

ASSISTANT DIRECTOR (C)  
Technology Support Services

ASSISTANT DIRECTOR (C)  
IT Business Operations

SENIOR PROJECT MANAGER (27)  
(2)

SENIOR PROJECT MANAGER (27)

SUPERVISOR I IT (25)  
(2)

SUPERVISOR I IT (25)

PAY BANDS 'C' & 'B'  
PAY GRADES 25-28

Funding from sources other than General Funds

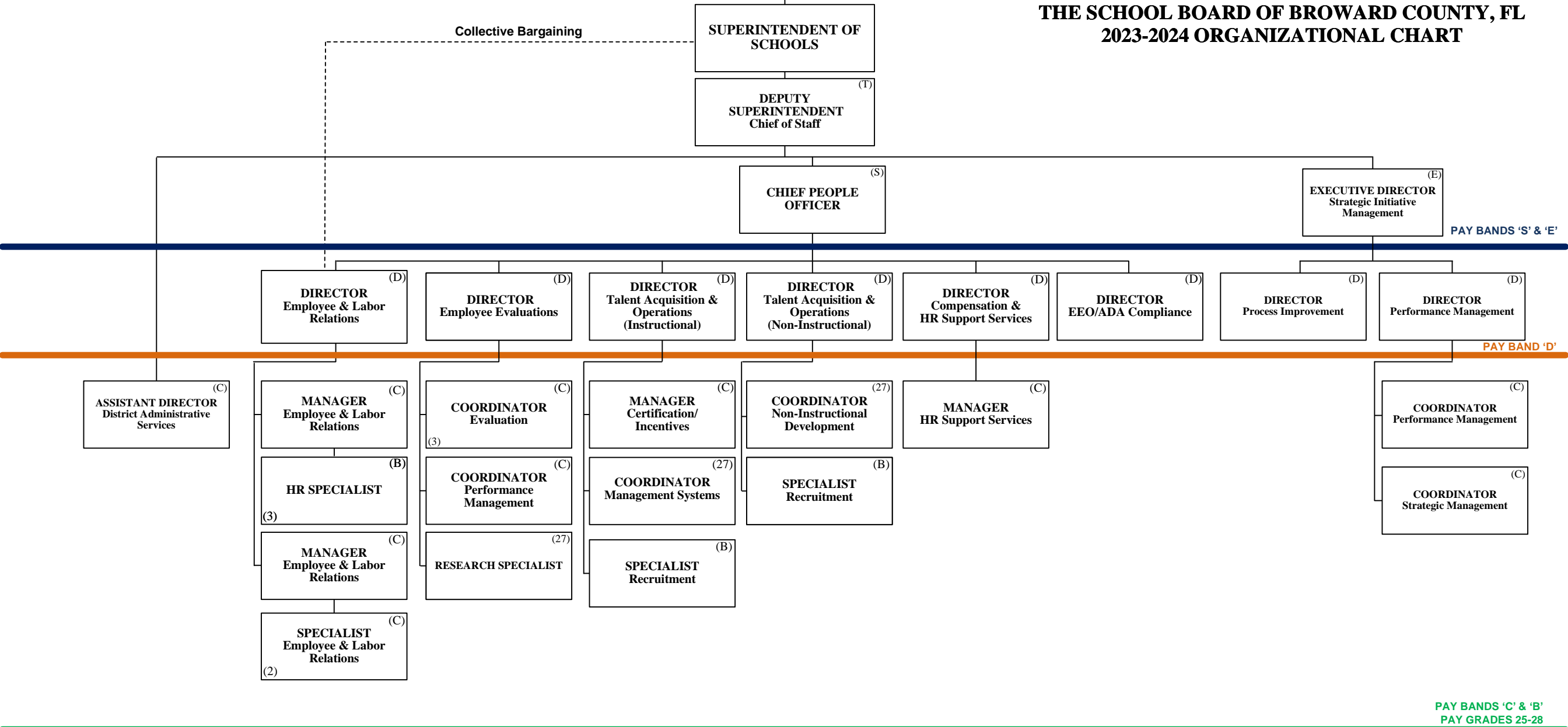
Funding:  
**C** Capital **FS** Food Service **Gr** Grant  
**G** General **R** Referendum

# CHIEF OF STAFF



THE SCHOOL BOARD OF BROWARD COUNTY, FLORIDA

## THE SCHOOL BOARD OF BROWARD COUNTY, FL 2023-2024 ORGANIZATIONAL CHART



PAY BANDS 'C' & 'B'  
PAY GRADES 25-28

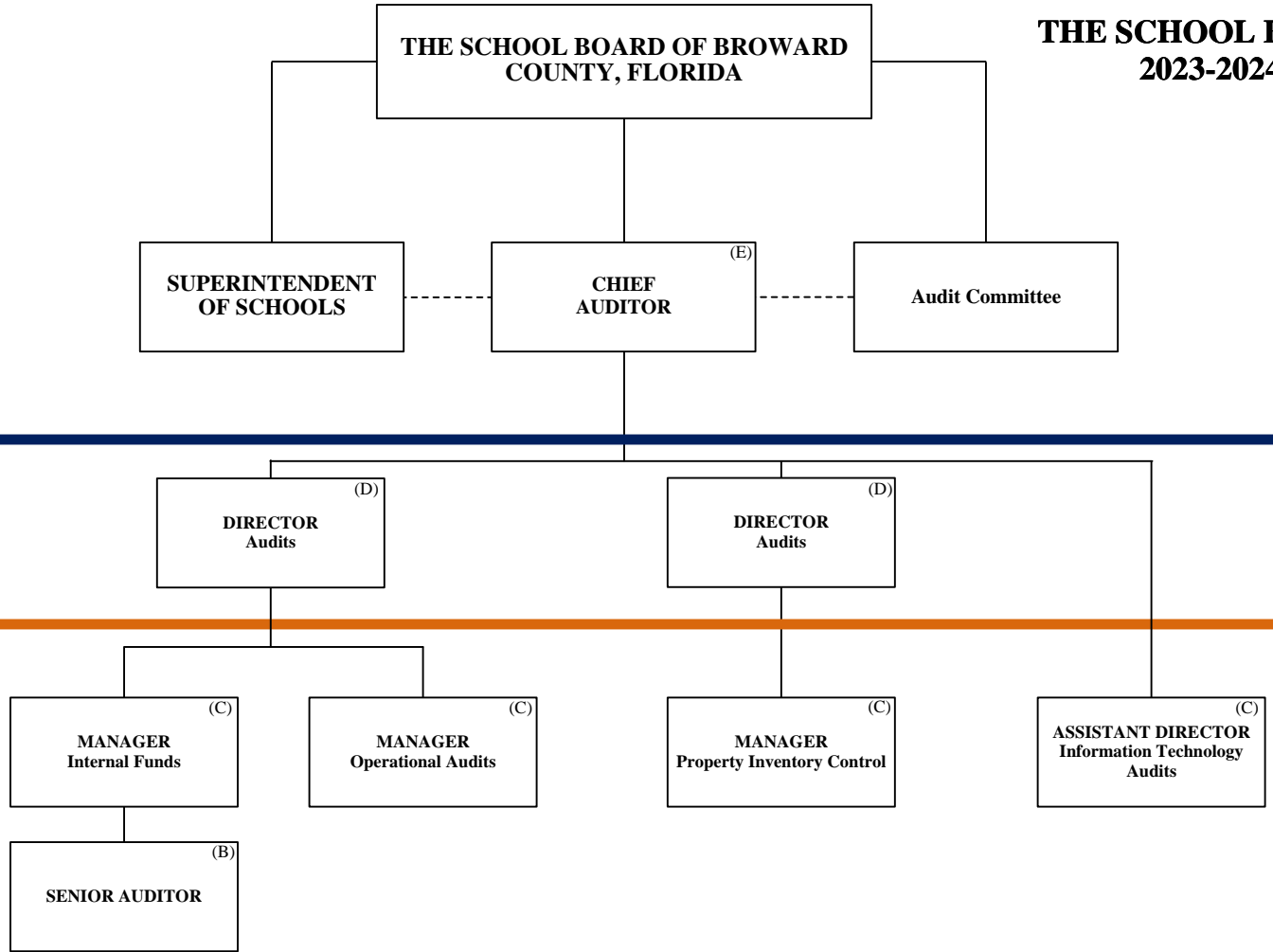
Funding from sources other than General Funds

Funding:  
**C** Capital **FS** Food Service **Gr** Grant  
**G** General **R** Referendum



**AUDITOR**

**THE SCHOOL BOARD OF BROWARD COUNTY, FL  
 2023-2024 ORGANIZATIONAL CHART**



PAY BANDS 'S' & 'E'

PAY BAND 'D'

PAY BANDS 'C' & 'B'



Funding from sources other than General Funds

Funding: **C** Capital **FS** Food Service **Gr** Grant  
**G** General **R** Referendum



**THE SCHOOL BOARD OF BROWARD COUNTY, FL  
2023-2024 ORGANIZATIONAL CHART**

